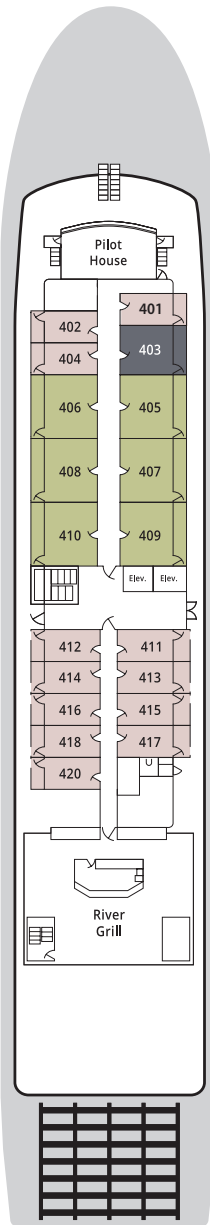


AMERICAN EMPRESS®

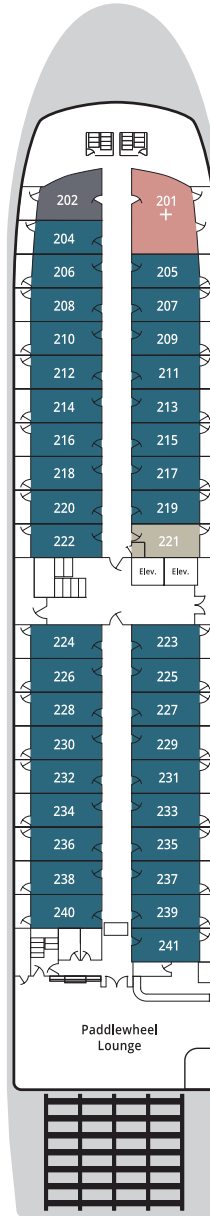
The largest, most elegant paddlewheeler cruising the Pacific Northwest, she hosts 217 guests on voyages following the historic route of Lewis and Clark. In addition to an inclusive range of educational enrichment and hospitable services, she boasts a dazzling collection of unique paintings and Native American art.



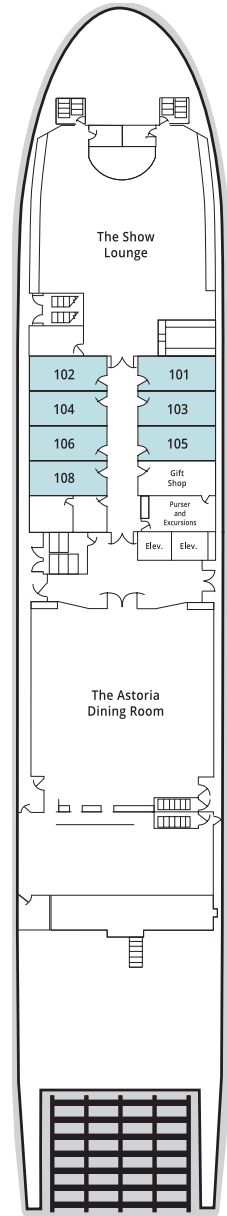
**DECK 4
VISTA VIEW DECK**
Pilot House
River Grill
Suites & Staterooms



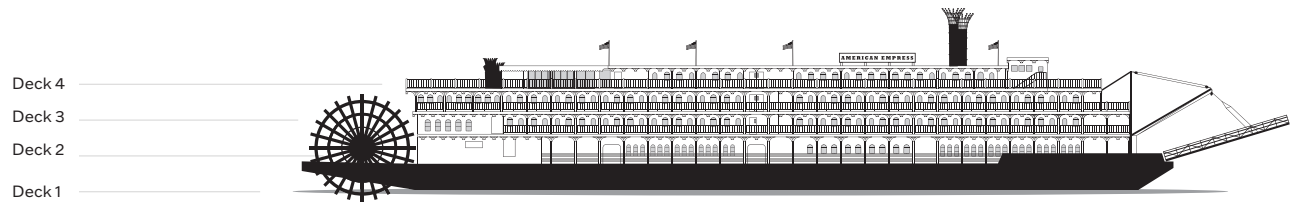
**DECK 3
DISCOVERY DECK**
Suites & Staterooms



**DECK 2
FRONTIER DECK**
Paddlewheel Lounge
Suites & Staterooms



**DECK 1
EXPLORER DECK**
The Show Lounge
Gift Shop
Purser and Excursions
The Astoria Dining Room
Staterooms



SPECIFICATIONS

Year Built/Refurbished	2003/2014	Staterooms	112
Length	360 Ft.	Guests	217
Guest Decks	4	Crew	83

SUITE & STATEROOM CATEGORIES

LS Luxury Suite with Veranda	DECK 2 DECK 3	D Outside Stateroom with Window	DECK 1
A Suite with Veranda	DECK 4	E Veranda Stateroom	DECK 4
B Superior Veranda Stateroom	DECK 2 DECK 3 DECK 4	SO Single Outside Stateroom with Veranda	DECK 2
C Deluxe Veranda Stateroom	DECK 2 DECK 3	♿ Accessible Suites and Staterooms Staterooms 341 and 346 feature a roll-in shower.	

+ Triple Occupancy



In-suite AMENITIES

Guests holding reservations for select suite-level accommodations will receive our exclusive *Commodore Services*. This elite level of services includes a bottle of wine and a fruit basket upon arrival, preferred dining arrangements, reserved balcony seating at the nightly shows and an invitation to dine with senior officers of the boat. *Inclusions vary by vessel.

ADDITIONAL AMENITIES

- Pre-boarding privileges
- Packing and unpacking of luggage
- Shoe shine
- Laundry and pressing service
- Afternoon tea served in room
- Pre-dinner canapes
- Reserved theater seating



SUITES & STATEROOMS

Each American Empire accommodation features a custom-built hardwood entertainment center and a spacious, illuminated armoire.

Fine linens and plush bedding will ensure that you are well-rested to fully enjoy all included shore excursions, historical lectures and nightly entertainment. A flat-screen TV, mini refrigerator, coffee maker and safe are provided, too.


LUXURY SUITE WITH PRIVATE VERANDA | 428 SQ. FT.

LS



Open French doors and step out onto your veranda to unwind on your amply furnished patio. Adorned with 11-foot vaulted ceilings, overhead lighting and a cozy interior lounging area with a sofa-bed and cocktail tables, these expansive suites can accommodate up to three guests, and epitomize luxurious river cruising. Relish the many exclusive benefits of our Commodore Services while your personal River Butler attends to your every need.



- Queen bed or two single beds
- Full bathroom with shower
- Sitting area with sofa
- Safe, Bathrobes and Slippers
- Flat-screen TV
- Interior access
- Located on Discovery and Frontier Decks
- Commodore Services, including a River Butler 

SUITE WITH SEMI-PRIVATE VERANDA | 332 SQ. FT.

A



Enjoy a large suite with a comfortable sitting area and premium sound system. Your semi-private veranda provides splendid river views from four stories above the river, and direct access to the wraparound Vista View Deck, perfect for sharing a view and socializing with fellow guests.



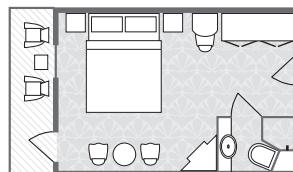
- Queen bed or two single beds
- Full bathroom with shower
- Sitting area with sofa
- Flat-screen TV
- Safe, Bathrobes and Slippers
- Interior and exterior access
- Located on Vista View Deck

SUPERIOR VERANDA STATEROOM WITH PRIVATE VERANDA | 224-245 SQ. FT.

B



Enjoy your spacious stateroom, with a cozy sitting area or a panoramic view through large forward-facing windows. Your private veranda provides a quiet place to watch the ever-changing scenery.



- Queen bed or two single beds
- Full bathroom with shower
- Sitting area
- Safe, Bathrobes and Slippers
- Interior access
- Flat-screen TV
- Located on Vista View, Discovery and Frontier Decks

Stateroom 403 features a semi-private veranda

Accessible stateroom 346 is 240 sq. ft., and features a roll-in shower

Staterooms 202, 302, 343, and 403 have queen fixed beds

DELUXE VERANDA STATEROOM WITH PRIVATE VERANDA | 200 SQ. FT.**C**

These staterooms are a popular choice for many couples. Share a toast on your private veranda as you glide through the fresh air of the Pacific Northwest.

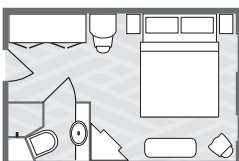


- Queen bed or two single beds
- Full bathroom with shower
- Safe, Bathrobes and Slippers
- Interior access
- Flat-screen TV
- Located on Discovery and Frontier Decks

Accessible stateroom 341 is 200 sq. ft., and features a roll-in shower

OUTSIDE STATEROOMS WITH WINDOW | 200 SQ. FT.**D**

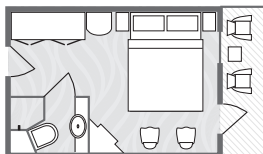
These large staterooms provide a cozy atmosphere and spectacular river views through a generously sized window.



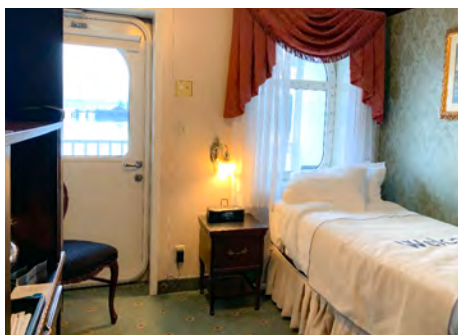
- Queen bed or two single beds
- Full bathroom with shower
- Safe, Bathrobes and Slippers
- Flat-screen TV
- Interior access
- Located on Explorer Deck

VERANDA STATEROOM | 170 SQ. FT.**E**

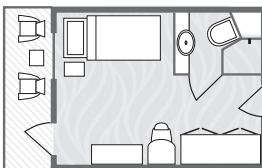
Enjoy a great value with our efficient yet spacious veranda staterooms. Your semi-private veranda provides a quiet place to watch the ever-changing scenery.



- Queen bed or two single beds
- Full bathroom with shower
- Semi-private veranda
- Safe, Bathrobes and Slippers
- Interior and exterior access
- Flat-screen TV
- Located on Vista View Deck

SINGLE OUTSIDE STATEROOM WITH PRIVATE VERANDA | 180 SQ. FT.**SO**

The single outside stateroom is slightly scaled down for the single traveler, but allows you to take full advantage of the splendid features of our Deluxe Veranda Staterooms.



- Single bed
- Full bathroom with shower
- Safe, Bathrobes and Slippers
- Interior access
- Flat-screen TV
- Located on Frontier Deck

Note: Stateroom information provided here is a general representation of the stateroom categories. Actual features and amenities vary slightly among and within stateroom categories. Verandas on the Vista View Deck are semi-private because the public walkway runs just over the railing. Please call and ask your reservations agent for details.